

The background is a collage of several artworks by the artist Damián Elizalde. The top row includes a piece with a large brown figure and a sun, a potted plant with red flowers, a stylized bird with a crown, and a figure in a red dress. The middle row features a dense floral pattern, a dark abstract piece with red wavy lines, and a colorful archway pattern. The bottom row shows another archway pattern, a seated figure in a white dress, a potted plant with red flowers, and a figure in a white and red dress. The text 'Collector's Catalogue' is overlaid in the center in a large, white, sans-serif font.

# Collector's Catalogue





## 19 Karen Contemporary Artspace: Mini Solo Show; Small and ephemeral

August 21st - September 18th 2021

It is a powerful experience when an artist exhibits a body of work for the first time to a captive audience. The undulation of story intricately woven together by each piece culminates into a personal journey that can only be forged through the enigmatic dynamic between the artist and the individual viewer. Imagine the magnitude of that experience multiplied by six. That is what 19 Karen Contemporary Artspace promises in their upcoming "Mini Solo Show" collective opening on Saturday August 21st.

Six Australian artists will contribute a small body of work, unlike a standard group showing however, the beauty in this type of exhibition lies in the diversity of the art on offer. Australian contemporaries Amber Kingi, Go Suga, Todd Romanowycz, Robyn Leoni Abbott, Jayde Chandler and Leigh Pearson will each showcase pieces that portray their artistic perspective via a theme that represents their current creative identity. This innovative format promises guests a sample of various artists and styles all in one seamless curation. From abstraction to expressionism, figurative to retro-urban, the appeal to this upcoming show is far reaching and it is sure to tantalise.

The concept was developed by gallery Director Terri Lew last year as means to continue to support local artists, as well as delight art enthusiasts, amidst the changing cultural climate. The gallery has also partnered with local brewers Young Henry's Brewery for the forthcoming show, who will be providing guests complimentary tastings of their popular brew. Live music will also be played by Burleigh's James Street Preachers.

Written by Monique Di Russo



# Amber Kingi

## Sultry Scenes

Amber Kingi is a self-taught artist from the Gold Coast, Queensland, who relies on her intuition and experimentation to create works that draw from the everyday.

With added make-believe and whimsy, Amber's created worlds of people, moments, imagined scenes and stories, come alive on canvas. Her imagined characters are caught in a time the viewer can relate to or dream of.

About this exhibition Amber says: "Sketching out ideas for this exhibition, I picked my favs... the ones I'm most excited to develop and see move to colour... when a common sultry theme emerge. Even as 2 tone sketches, the pieces held a sultry boudoir vibe.

Embracing this, I accentuated the images applying deep autumn tones and what resulted? 'Sultry Scenes' of strong women in my style .

What I enjoy is that although the scenes themselves aren't sexual or scandalised... there is a sensual private tone to them. A sultry essence.

Listen to #1 crush by Garbage, 'Sweet Dreams' and 'Tainted Love' by Marilyn Mawson, while viewing the pieces to step into my mindset in the beginning. I was listening to 90s rock and the tone of this song may have leaked onto my sketch pad."





**MICKEY**

Acrylic on canvas  
122 x 92 cm

**\$2900**



**SELWYN**

Acrylic on canvas  
122 x 92 cm

**\$2900**



**EADIE**

Acrylic on canvas  
122 x 92 cm

**\$2900**



**ALEEANA**

Acrylic on canvas  
122 x 92 cm

**\$2900**



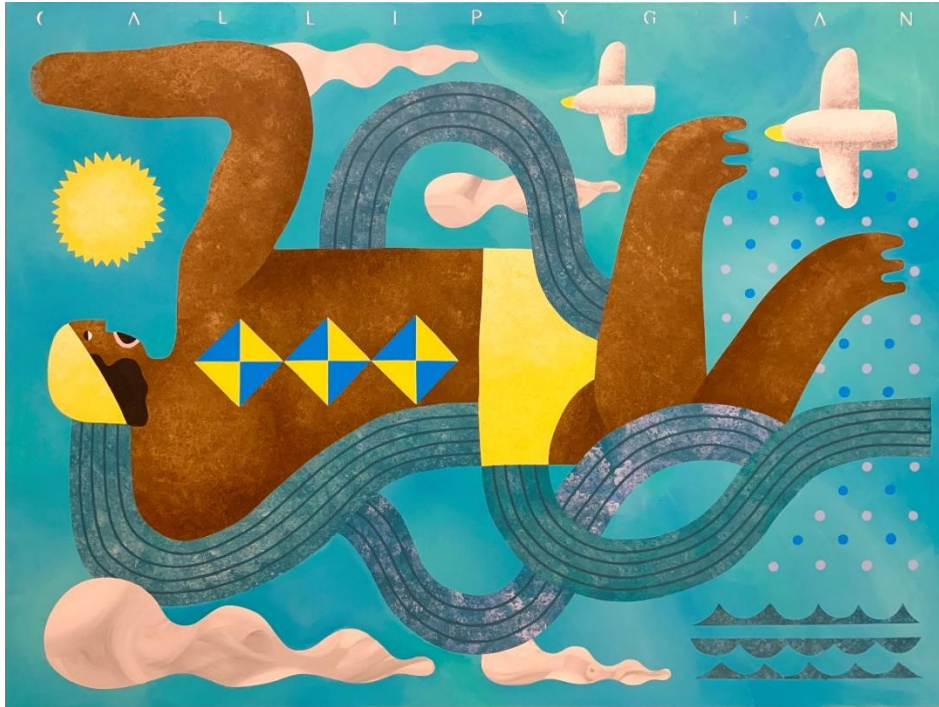


# Go Suga

## Yin Yanga

Go Suga was born in Hiroshima, Japan, where he began drawing as a child along with his brothers. This early interest spawned a passion for art that would continue into adulthood. Suga migrated to Australia with his family when he was ten years old, settling on the Gold Coast where he obtained his formal qualification in Graphic Design.

About this exhibition Go Suga says: "Oh yes! It's YIN YANGA time! In this show I display DARK (YIN) and BRIGHT (YANGA) coloured works created using a new painting process that I developed over the past 2 years. Almost every painting I've done in the past 7 years have been made of bright colours and simple shapes, for these new body of works I have more detail and textures. Also for some of the paintings for this show I took a deep dive into the other side....the dark side."



### OCEAN SWIM

Acrylic on canvas  
122 x 92 cm

**\$2900**



### OKEANO

Acrylic on canvas  
122 x 92 cm

**\$2900**





### SOUTH WIND

Acrylic on canvas

122 x 92 cm

\$2900



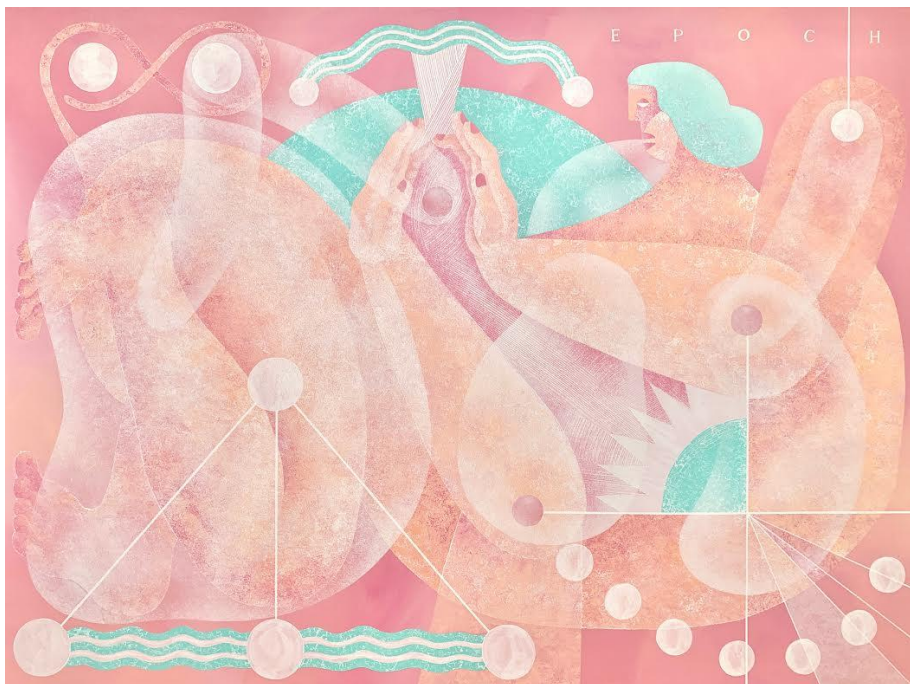
### SPACE BUBBLE MONKEY

Acrylic on canvas

122 x 92 cm

\$2900

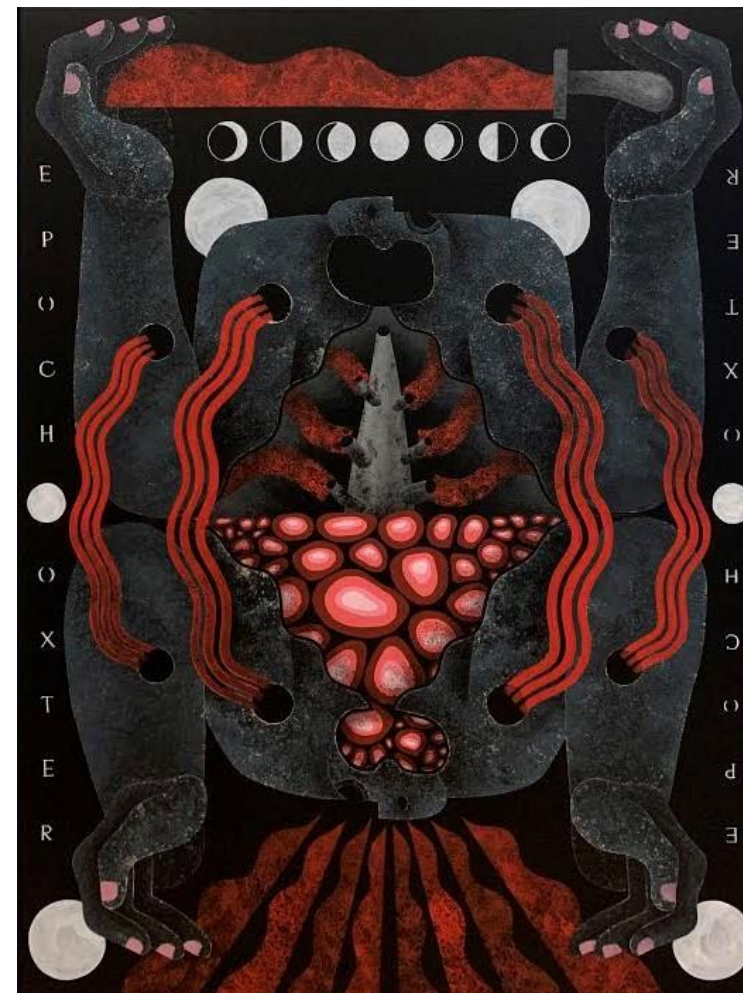




**BIRTH OF MOTION**

Acrylic on canvas  
122 x 92 cm

**\$2900**



**STARBOYZ 3 - KING DAVID**

Acrylic on canvas  
122 x 92 cm





**STARBOYZ 1 - FINDING DAVID**

Acrylic on canvas  
122 x 92 cm

**\$2900**



**STARBOYZ 2 - FOUND DAVID**

Acrylic on canvas  
122 x 92 cm

**\$2900**





# Todd Romanowycz

## Floral Connection

Todd Romanowycz has a unique style of painting with acrylic on acrylic sheets (Perspex).

The clean and sharp finish has a graphic quality and the works have a retro feel, often incorporating nostalgic elements such as old cars and bikes. This display features themes of landscape and still life, but is far from traditional.

About this exhibition Todd says: "I started experimenting with acrylic artworks around a decade ago. In the beginning it was cutting, grinding, engraving and glueing to get the end result. Now days after much experimenting, my artworks are produced by the process of painting in reverse on the back of acrylic sheets. While also having a passion for landscaping/gardening it was a natural progression that I started painting still life paintings, in particular Australian natives. This latest group of paintings combines my love of working with acrylic and the beauty of Australian native flowers."



**CERULEAN BANKSIA**

Acrylic paint on Perspex  
104 x 104 cm

**\$2300**



**3 TONE TERRACOTTA**

Acrylic paint on Perspex  
104 x 104 cm

**\$2300**





### LEMON BANKSIA

Acrylic paint on Perspex  
104 x 104 cm



### NATURAL BANKSIA

Acrylic paint on Perspex  
104 x 104 cm

**\$2300**



**MAGENTA BANKSIA**

Acrylic paint on Perspex  
104 x 104 cm

**\$2300**



**TERRACOTTA BANKSIA**

Acrylic paint on Perspex  
104 x 104 cm

**\$2300**





# Robyn Leoni Abbott

## Everything Is Sometimes

Robyn Leoni Abbott graduated from Central Metropolitan College in Perth with qualifications in Arts and Design. Abbott's penchant for colour and design underpins her work, where her expressionist creations pivot on a spectrum of pattern, abstraction, nature and subjectively, her interpretations of the human psyche.

About this exhibition Robyn says: "This series of paintings were created throughout the summer of 2021. Fleeting moments captured and expressed in these semi abstract landscape paintings were fueled by my environment, memory and lifestyle.

The act of painting leads to the joy and challenge of bringing imagination to light and the discovery of fleeting moments that contribute to memory, with the intention to give pleasure over time. Over time memory alters as do the stories that paintings tell.

Everything is sometimes nothing is always."





**SOFT AND STRONG**

Acrylic on linen  
92 x 122 cm

**\$2200**



**BOY AND THE EAGLE**

Acrylic on linen  
102 x 102 cm

**\$2100**





**FEATHERED FRIEND**

Acrylic on linen  
102 x 102 cm

**\$2100**



**PERFECT DAY**

Acrylic on linen  
183 x 102 cm

**\$2900**



### ADVENTURE TIME

Acrylic on linen  
122 x 122 cm

\$2500



### DAYDREAM BELIEVERS

Acrylic on linen  
122 x 122 cm

\$2500





# Jayde Chandler

## Staycation

Based in Barcaldine in Western Queensland, Jayde Chandler lives on a sheep and cattle property which has deepened her connection with Australia's harsh but incredibly beautiful landscape. Combined with her passion for bold joyful colour, this affinity results in an idiosyncratic interpretation her surroundings which translates to her multilayered and textural abstract expressions.

About this exhibition Jayde says: "The idea behind the four pieces Surf, Sun, Sand and Sanctuary was that we have so much to offer on our own doorstep and during this time of "staying at home" we can embrace the staycation."





# **SUN**

Acrylic on canvas  
105 x 105 cm

**\$3500**



# **SURF**

Acrylic on canvas  
105 x 105 cm

**\$3500**





### **SAND**

Acrylic on canvas  
105 x 105 cm



### **SANCTUARY**

Acrylic on canvas  
105 x 105 cm

**\$3500**





# Leigh Pearson

## Afresh

About this exhibition Leigh says: "I began this body of work after more than a year away from painting – a year that included closing the doors on my Melbourne life, stepping into that exciting and terrifying space of not knowing what lies ahead, and finally, to creating my new life in northern New South Wales. As I began afresh in my beautiful new studio space I was quite curious to see what would emerge on the canvas.

Painting, for me, is always a journey into the unknown. I traverse new territory with every work, trusting in the unfolding, in the magic that occurs when I get out of the way and let it happen. The creation of a body of work is a journey of its own. I begin by simply making marks, or laying down some colour. From there it is a process of responding to what happens on the canvas, letting myself be drawn in, really being present with the work, allowing it to be what it wants to be, rather than what I think it should be.

Each painting informs the next one, and so it goes until the body of work is completed.

When I look at and reflect upon this body of work I feel I am seeing into a mystical space, I have a sense of otherworldliness. I see abundance, life, growth, hope. This work has emerged at a time where our lack of care for, and disconnect from our planet is having devastating consequences. These paintings serve as a reminder of our connection to the natural world, a reminder of its preciousness. I feel they depict a reverence for the planet, and a sense of hope for a more loving connected world. "





**FLORESCENCE**

Oil on canvas

100 x 100 cm

**\$2500**



**BELONGING**

Oil on canvas

100 x 100 cm

**\$2500**



# **COURAGE**

Oil on canvas

100 x 100 cm

**\$2500**



# **NEST**

Oil on canvas

100 x 100 cm

**\$2500**





# OFFERING

Oil on canvas

100 x 100 cm

**\$2500**



# WORSHIP

Oil on canvas

100 x 100 cm

**\$2500**